



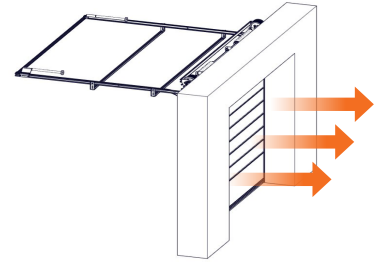
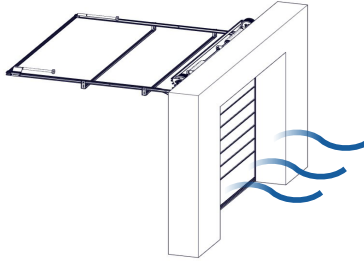
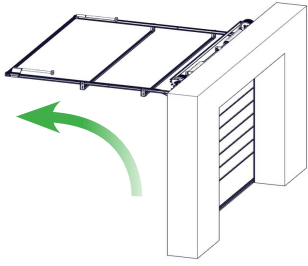
INDY GT-R HIGH-SPEED SECTIONAL DOOR

INDY GT-R The impuls for development of this new product was overall greening of operational building features. INDY GT-R will show you, how easily meet stated requirements. By combination of high speed (opening/closing) and excellent thermal insulating features, we get new unique generation of Industrial Door - INDY GT-R. Technical parameters are improved that much, so the door stand their native functions as much effective together with as best as possible energy balance while using.

- + thanks to higher speed of opening/closing there is possible faster passage through the door
- + lower air circulation between outside and inside
- + energy saving while heating or air conditioning

4X LOWER ENERGY LOSS
COMPARED TO CLASSIC
SECTIONAL DOORS

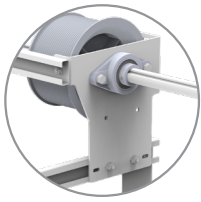




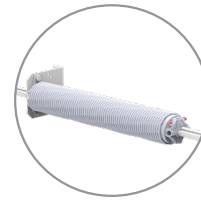
Opening speed
* 1,4 m/s

Air permeability
* 6 m³/m²h

Thermal permeability
* 1,18 W/m²K

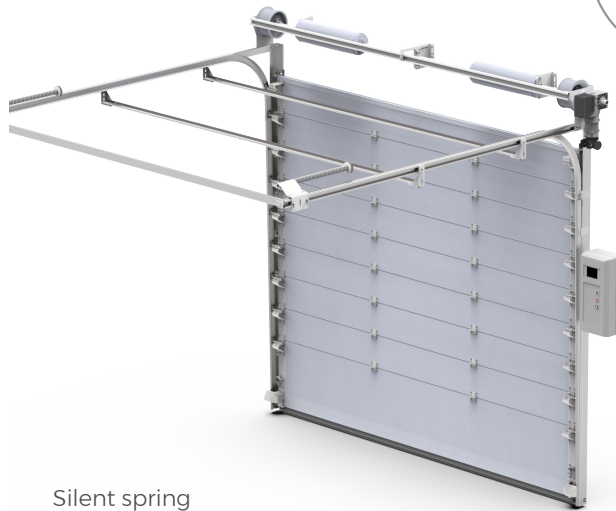
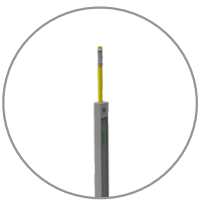


Newly developed massive components, as consoles, bearings and struts



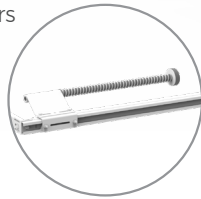
Springs for 50 000 cycles hang on 1 1/4" shaft

Light grid ensuring door safety



Control unit with FREQUENCY CONVERTER

Silent spring bumpers



Parameter	INDY GT-R	INDY
Width	5 000 mm	5 000 mm
Height	5 000 mm	5 000 mm
Height of section	244-610 mm	610 mm
Maximum current opening speed	1,4 m/s	0,25 m/s
Panel thickness	40 mm	40 mm
Thermal permeability „U“	1,18 W/m²K	1,02 W/m²K
Opening / closing time	4 s	20 s

* Valid for dimensions of 5000mm x 5000mm